

# Warehousing Artificial Intelligence

## Introducing a Low Entry Opportunity to the AI world

**Optimizing Yard Management, Quality, and Safety Compliance  
by Arvist AI Solutions**

Information: [jelle.van-der-haak@supplychainconsultancy.at](mailto:jelle.van-der-haak@supplychainconsultancy.at)  
Tel: +43 699 141 07 177





# Supply Chain Consultancy

Warehouse operations are nowadays subject to changes and challenges in such a speed as never before. A lack of manpower market availability, and increased Safety compliances are just a few of these challenges

Artificial Intelligence (AI) offers new ways of support to address these challenges. AI in Warehousing operations can be split into Operational Efficiency, Predictive Analytics, and Resilience & Agility

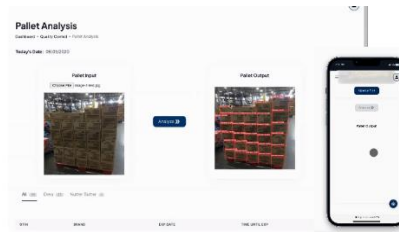
## The Issue:

Although potentials of AI in warehousing operations are widely recognized, there still is a **slow adoption** in practice. Main reasons for this are: **Technical & Operational hurdles** (Integration complexity), **Invest & ROI** (high cost and long pay-back times), and **Ethical & Employment concerns** (privacy and job losses). Consequently AI-applications in Warehousing operations are rare.

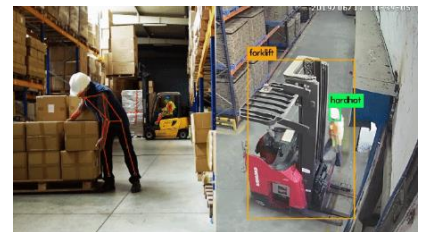
Tech company **Arvist** offers AI solutions focused on **Operational Efficiency**, specifically **Yard management, Quality, and Compliance**, with **low Technical & Operational hurdles, no invest requirements, and respecting Ethical concerns**



**Yard management**  
Truck registrations and movement control



**Quality –**  
Goods receiving check



**Compliance –**  
Health and Safety

## Supply Chain Consultancy Solution:

By introducing Arvist AI solution for Warehousing, a low barrier AI entry, opening the door to a wealth of improvement opportunities

## Arvist Methodology:

Using existing infrastructure (cameras) at your warehouse, with a simple installation & usage integration in your current WMS and ERP-systems, and storing data locally, the system offers you useful real-time insights and alerts to improve operations and compliance

Interested? Contact us under [jelle.van-der-haak@supplychainconsultancy.at](mailto:jelle.van-der-haak@supplychainconsultancy.at)

